

Recording & Monitoring of SSI Data Links Type: REMOS dl



Diagnostic smart tool for SSI DL problems & DL restoration.

SSI Data Links are notoriously difficult to fault find, particularly when there are multiple faults present e.g. following a lightning strike.

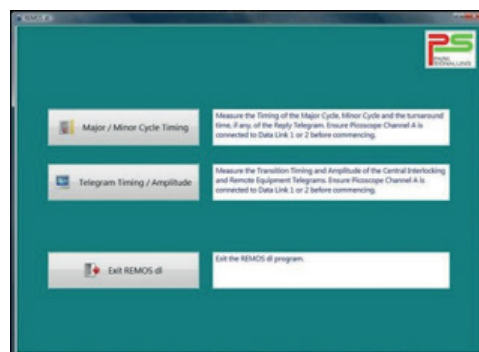
The current NR maintenance regime requires that SSI Data Links are tested on a regular basis, which is expensive and time consuming.

REMOSdl is a tool to monitor the baseband links continuously and eliminate the need to carry out regular checking. Also provides faulting assistance when data link problems occur, e.g. following a lightning strike, allowing faster restoration of the link.

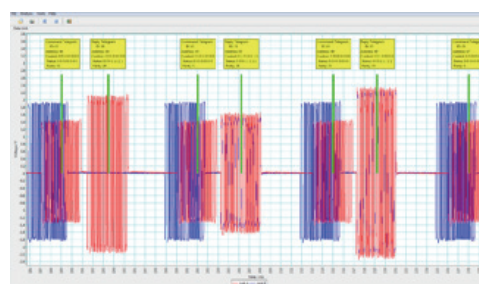
REMOSdl is a standalone system that could be easily added retrospectively to a data link. It eavesdrops on the data link in order to monitor and report on performance changes.

It supplements the capability of existing SSI based asset watch systems to detect and identify faulty data components, including data link modules, isolating transformers, surge protection units and cable faults and incorrect termination.

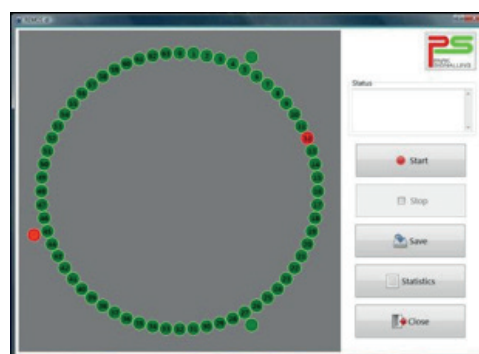
It can also diagnose certain telecoms faults such as changes in delay as a result of changes to path length in diverse routing.



Intro Screen



Telegram Timing



Telegram Timing & Amplitude

Major Cycles					
Cycle	Average	Minimum	Maximum	Reply	Average
0-1	132 ms	97 ms	204 ms	1	5.6 ms
1-2	132 ms	97 ms	204 ms	2	5.6 ms
2-3	132 ms	97 ms	204 ms	3	5.6 ms
3-4	132 ms	97 ms	204 ms	4	5.6 ms
4-5	132 ms	97 ms	204 ms	5	5.6 ms
5-6	132 ms	97 ms	204 ms	6	5.6 ms
6-7	132 ms	97 ms	204 ms	7	5.6 ms
7-8	132 ms	97 ms	204 ms	8	5.6 ms
8-9	132 ms	97 ms	204 ms	9	5.6 ms
9-10	132 ms	97 ms	204 ms	10	5.6 ms
10-11	132 ms	97 ms	204 ms	11	5.6 ms
11-12	132 ms	97 ms	204 ms	12	5.6 ms
12-13	132 ms	97 ms	204 ms	13	5.6 ms
13-14	132 ms	97 ms	204 ms	14	5.6 ms
14-15	132 ms	97 ms	204 ms	15	5.6 ms

Telegram Timing & Compare



Park Signalling

3rd Floor, Houldsworth Mill, Houldsworth Street,
Reddish, Stockport, SK5 6DA

Tel: +44 (0) 161 219 0161

email: sales@park-signalling.co.uk

www.park-signalling.co.uk