

Surge Arrestor (GWATP) Type: SP20



Overview

Surge arrestor accepted for use in GW ATP Lineside Enclosures on the incoming 110V supply lines and on all connections to the ATP Track Beacons and Loops.

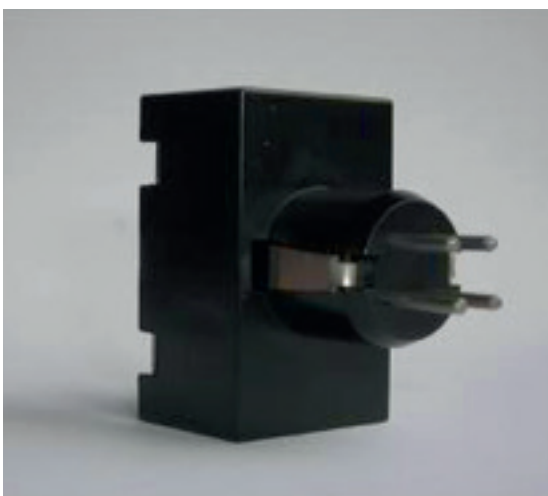
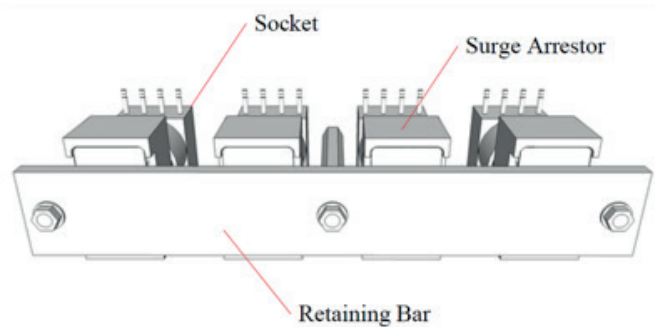
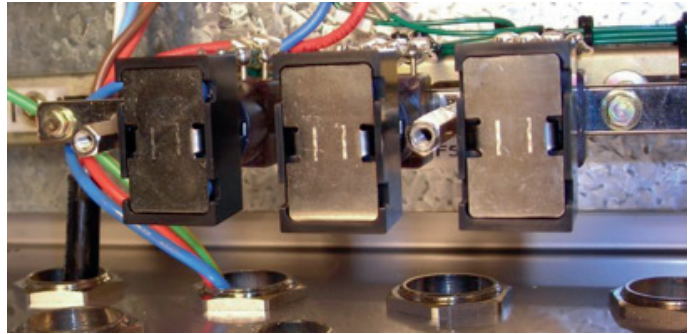
Type SP20 Surge Arrestor is a replacement for the existing Surge Arrestors used in GW ATP Lineside Enclosure. SP20 Surge Arrestors are fitted to protect the Lineside Encoder from voltage surges on cable entering the enclosure.

The Surge Arrestors are located at the bottom of the Lineside Enclosure. Typically 3 or 4 are installed. The number required should be confirmed by inspection of the drawing for the Lineside Enclosure.

The units are held in the sockets by a retaining bar lined with foam rubber padding as shown, below.

Electrical connections

All connections are made via the 4 pin plug base, in accordance with GS/ES1937.



Park Signalling

3rd Floor, Houldsworth Mill, Houldsworth Street,
Reddish, Stockport, SK5 6DA

Tel: +44 (0) 161 219 0161

email: sales@park-signalling.co.uk

www.park-signalling.co.uk